

With the Instant-Acoustics®-Designmodule you can easily do the planning of your studio-rooms using Instant-Acoustics®-modules. Designmodule automatically calculates the reverb-times of your room. To use the design-module requires that you have the MS-Word program installed on your computer (word 97 or higher).

Download the Designmodule from our homepage: <http://www.sel.at/eng/download.htm>, start „designe.doc“ and you can begin planning.

FIRST STEPS:

After starting Designmodule a worksheet with 2 rulers and the menu-bar appears on your computer-screen.

Select “Room description” on the menu-bar and enter length, width and height if your room to the dialog-box.

The floor-plan of your room will appear on the worksheet.



Fig.3: Dialogbox „Room description“



Fig.1: The initial screen of Designmodule



Fig.2: The menubar of the Designmodule

EQUIPPING THE ROOM:

Clicking on the menu-bar's “Entities”-button will make a chart appear on the worksheet where you can choose a variety of elements to furnish your room, like mixing-console, loudspeakers, chair, window... .

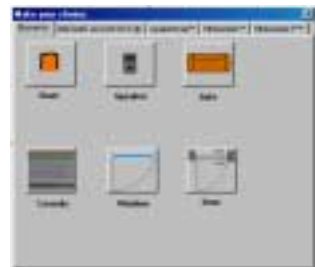


Fig.4: Chart with entities



Fig.5: The room with window, door, console,...

By now you can furnish your room at will. The rulers can be dragged across the sketchboard and will help you positioning the entities precisely.

ACOUSTIC DESIGN:

On the other charts you will find all Instant-Acoustics®-modules, you can now insert into the room. You will find more detailed information on that subject in the help-file of the Designmodule.

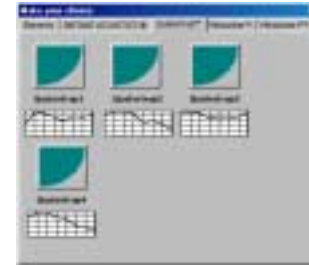


Fig.6: Chart „Quatertraps“



Fig.7: The room is completely equipped now

CALCULATION OF REVERBTIMES:

The result of your planning, represented by alteration of the reverbtimes of your room, can as well be called up after finishing the planning but also after each single step of equipping the room. Click on the menu-bar's “Result”-button and a chart will appear on the worksheet showing the frequency-bands in the first line, the original reverbtimes of your room in an empty state in the second line, and the third line shows the reverbtimes at the current state of planning .

result								
F	63	125	250	500	1000	2000	4000	8000
O	4,26	4,26	4,26	3,38	3,63	2,84	1,66	1,29
A	1,14	0,52	0,38	0,34	0,36	0,47	0,42	0,47

Fig.8: Chart showing the results of reverbtime-calculation

YOU FINISHED PLANNING:

When you are done with the work on planning your room and you are satisfied with the result, simply click on the „plan@sel.at“ -button on the lower right side of the worksheet, and the plan will be automatically sent to our office. We then will check the plan for accuracy and do some corrections if needed. After this we will make you a special price for the whole package, and send the adapted plan with an estimate of pricing to your e-mail-address.



Fig.9: Send-button for automated plan-transmission to SEL

BUT:

If you do not like to do the planning yourself, then simply draw your room with doors and windows, send in the plan, and we'll go all the way for you.